



GOD PROTECTS

"GOD IS OUR REFUGE & STRENGTH ..."

PSALM 46:1



Cut out the paper on the opposite page along the dark dashed lines. Then follow the directions. Each numbered diagram corresponds with the numbered directions below.

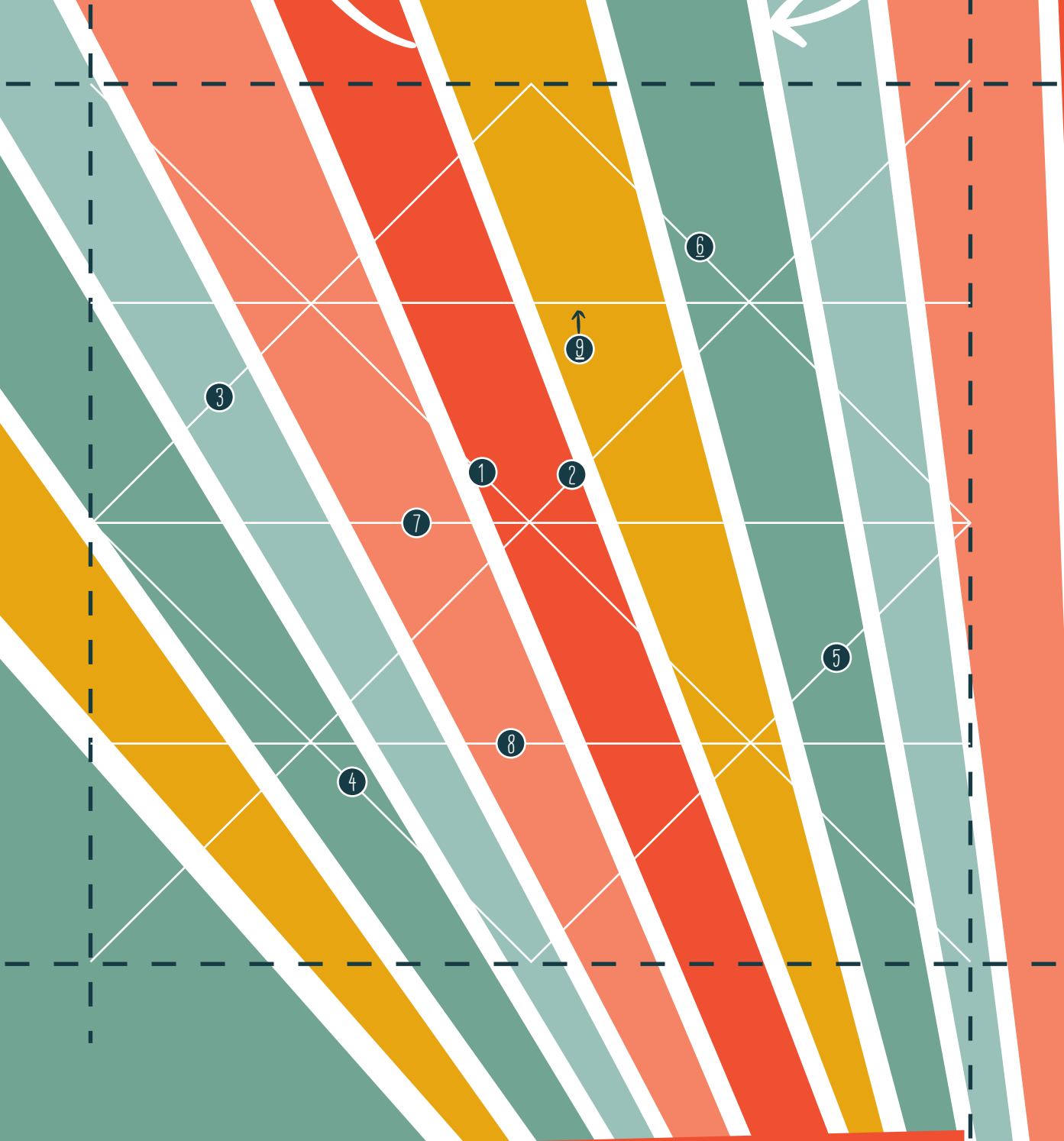


1. Fold over on line ① & then unfold.
2. Fold over on line ② & then unfold.
3. Fold over on line ③ - ⑥ . Unfold again.
4. Fold over on line ⑦ . Unfold.
5. Fold over on lines ⑧ & ⑨ . Keep folded.
6. Pinch at the two diagonal lines in the diagram. Pull down & fold over to meet at the center line.
7. Repeat step 6 on the opposite end.
8. Fold in on lines ③ & ⑤.



USE A **PUSHPIN**
AND STICK IT THROUGH THE
MIDDLE OF YOUR **PINWHEEL**
INTO THE TOP OF A
STRAW. LEAVE A GAP
BETWEEN THE STRAW AND
PUSHPIN TO HELP IT SPIN!

make your own
PINWHEEL

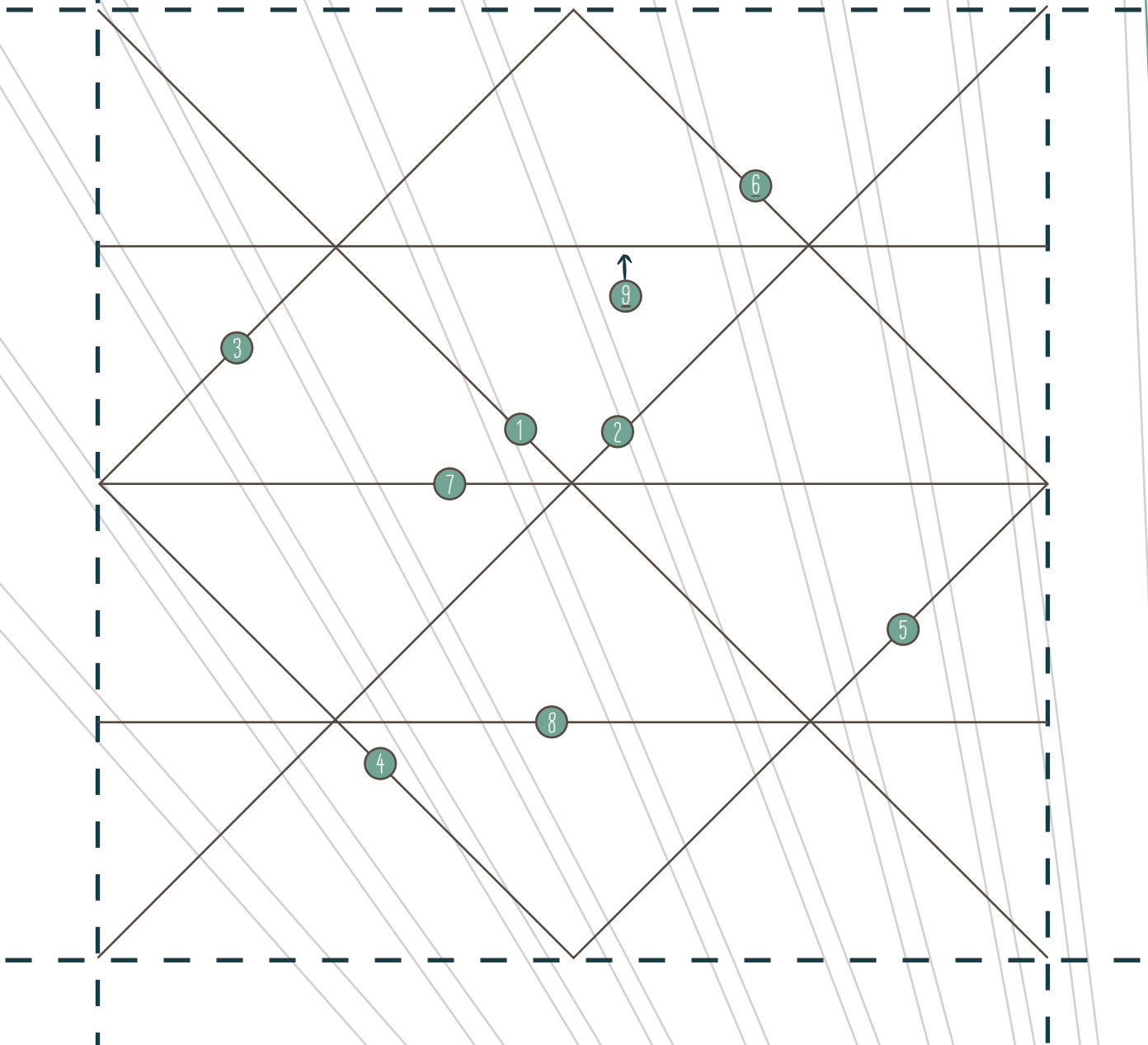


origami tip:

Try using a paper clip to score your lines before folding!



make your own
PINWHEEL



origami tip:

Try using a paper clip to score your lines before folding!

